

Migration Solutions
Line-of-sight Detectors



**Upgrade to FlexSight™
LS2000 Line-of-sight
Detector**



Advance Protection and Lower Cost

OUR NEVER COMPROMISE ATTITUDE

Det-Tronics systems protect lives and valuable assets around-the-clock globally. We are driven to improve systems to reduce risk and advance protection.

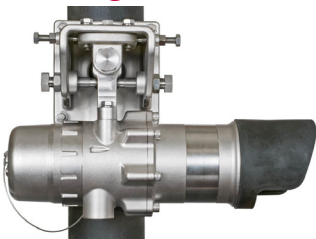
Why upgrade? The latest generation products will:

- ▲ Meet or exceed current regulatory approval requirements
- ▲ Reduce the total cost of operation
- ▲ Speed installation and maintenance tasks
- ▲ Enhance user experience and interaction

It's time to upgrade to a higher standard.

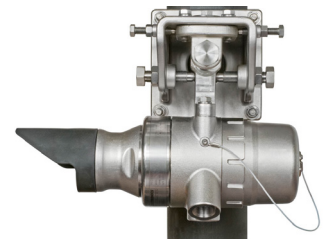


FlexSight™ LS2000 Line-of-Sight Detector Is an Advancement



**THIRD-PARTY
CERTIFIED
FROM 5 TO
120 METERS**

**AND FROM
-55°C TO
+75°C (-67°F
TO +167°F)**



Your local representatives can help you implement site-specific solutions tailored to meet your change requirements. Contact them today to begin the product migration process.

APPLICABLE LEGACY PRODUCTS:

- ▲ OPECL – Relay/4-20ma
- ▲ OPECL – EQP/LON

Compared to legacy products, the FlexSight™ LS2000 Line-of-Sight Detector:

Enhances performance

- ▲ Comprehensive onboard event logs
- ▲ Highly Visible LED status indicators
- ▲ More consistent signal strength for more accurate measurements

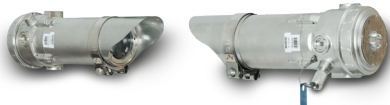
Reduces maintenance cost

- ▲ Simple alignment procedure—over 50% reduction in setup time
- ▲ Simple replacement of OPECL with LS2000 on EQP LON—no programming required
- ▲ Best in industry alignment tolerance (0.8°)—stays aligned
- ▲ Best in industry warranty (5yrs/10yrs – source lamp)

OPECL LIFECYCLE

MANUFACTURED 2004–SEPTEMBER 2019

SUPPORTED 2004–JANUARY 2020



FLEXSIGHT™ LS2000 LIFECYCLE

MANUFACTURED 2015–FUTURE

SUPPORTED 2015–FUTURE

Upgrade Specifics

INSTALLATION REQUIREMENTS

Tools: Screwdriver, wrenches
 Time: 1 hour per unit
 Power*
 Transmitter: 10.7 watts max @ 24Vdc
 Receiver: 7.2 watts max @ 24Vdc
 Space: Same footprint as the OPECL
 Communication: Same options as the OPECL

*LS2000 power draw at the 30% heater setting is equivalent to the OPECL

Refer to pages 15-29 of the instruction manual.



SIMPLE INSTALLATION

ACCESSORIES

012287-002:	LS2000 Alignment Tool
012673-001:	System Test Films, LS2000
103922-003:	AMS Trex™ HART Communicator
014020-001:	W6300G1006 Gas Inspector II Kit (PC software and connection hardware included)
009246-003	Gas Test Cell, LS2000 Methane ISO
009246-004	Gas Test Cell, LS2000 Methane IEC
009246-005	Gas Test Cell, LS2000 Propane ISO
009246-006	Gas Test Cell, LS2000 Propane IEC
009246-007	Gas Test Cell, LS2000 Butane ISO
009246-008	Gas Test Cell, LS2000 Butane IEC
012718-003:	Flat Surface Adapter Plate (converts OPECL flat surface mounting to LS2000)
012790-001:	Thermal Shield for Right Module
012791-001:	Thermal Shield for Left Module

MAINTENANCE

Calibration: Zero calibration only required after alignment is performed, no span calibration required
 Alignment: Only required at startup—best in class alignment tolerance
 Service: The optics can be cleaned with isopropyl alcohol as needed
 Parts: Spare transmitter and receiver modules are available and can be replaced without removing wiring or interfering with the alignment
 Functional: Checks performed as required by local regulations – test films are available to test low and high alarm outputs
 Warranty: 5 years, 10 years on the source lamp
 Refer to the instruction manual for specifics.

MAINTENANCE PLANNING

	Spares	Repairs
LS2000:	Yes	Yes
OPECL:	No	No

SUPPORT MATERIALS

95-8714:	Instruction Manual
95-8738:	LS2000 Gas Cell
90-1215:	Spec Sheet
95-8727:	Safety Manual
51-1008:	Features and Benefits Video
51-1009:	Install and Commission Video
51-1018:	Upgrade Video

SUPPORT MATERIALS AVAILABLE AT:

WWW.DET-TRONICS.COM





A Global Leader in Fire and Gas Safety Systems

SAFETY & PROTECTION — SINCE 1973

Additional Product Migrations:



**LEGACY
FLAME DETECTORS**



**X-SERIES
FLAME DETECTORS**

KEY UPGRADE FACTS:

- ▲ Improved false alarm rejection
- ▲ Onboard event logs
- ▲ Detects more flame types
- ▲ Longer warranty



**LEGACY (C706X)
TOXIC GAS DETECTORS**



**GT3000*
TOXIC GAS DETECTORS**

KEY UPGRADE FACTS:

- ▲ HART communication
- ▲ Onboard calibration logs and status LED
- ▲ Hot swappable replacement sensors
- ▲ One transmitter model for all gas types

* The GT3000 Toxic Gas Detector is not available for sale in the European Union (EU) and the United Kingdom (UK).



**LEGACY TX (U9500)
DISPLAYS**



**FLEXVU® UD10/UD20/UD30
UNIVERSAL DISPLAYS**

KEY UPGRADE FACTS:

- ▲ Large, heated backlit display
- ▲ Onboard calibration logs
- ▲ Non-intrusive menu interface
- ▲ Easy install and legacy compatibility

Learn more about these products at www.det-tronics.com or speak to your local representative.

92-1077 1.4 (US)



Corporate Office
6901 West 110th Street
Minneapolis, MN 55438 USA
det-tronics.com

Phone: +1 952.941.5665
Toll-free: +1 800.765.3473
Fax: +1 952.829.8750