

DESCRIPTION

Detector Electronics Q9001G, H, J and K are 316 stainless steel swivel brackets designed to replace most Q9001B, D, E and F aluminum, nickel plated brass and stainless steel swivel brackets. The new models offer greater positioning flexibility, increased shock and vibration resistance and easier cable entry access. For ease of installation, the new models retain the mounting pattern of the swivel assemblies that they replace (see Figure 1 for mounting base dimensions).

Figure 2 illustrates the Q9001G Swivel Bracket for use with C7051C Nuclear Surveillance Detectors and C7052 Ultraviolet/Infrared Detectors that use cast junction boxes. The Q9001G replaces the Q9001F.

Figure 3 illustrates the Q9001H Swivel Bracket for use with nickel plated brass and stainless steel C7050 UV Detectors. The Q9001H replaces the nickel/brass and stainless steel models of the Q9001B.

NOTE

The aluminum Q9001B is still in use and remains unchanged.

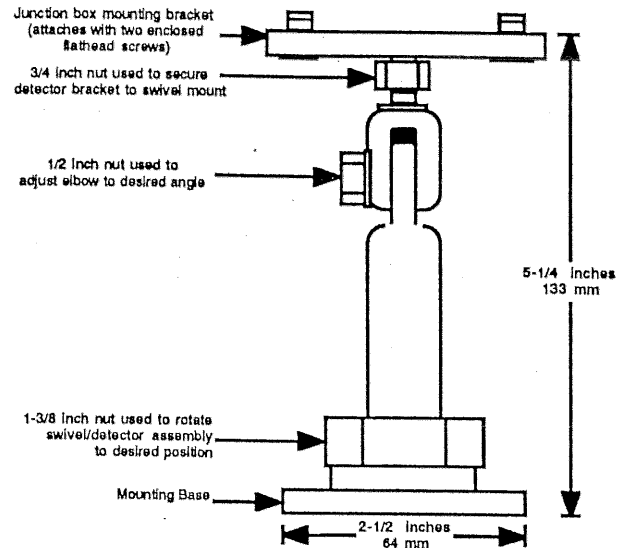


Figure 2--Q9001G Swivel Mounting Bracket (replaces Q9001F)

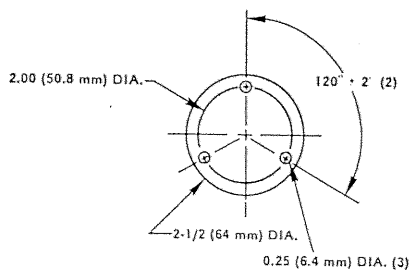


Figure 1--Mounting Base Dimensions

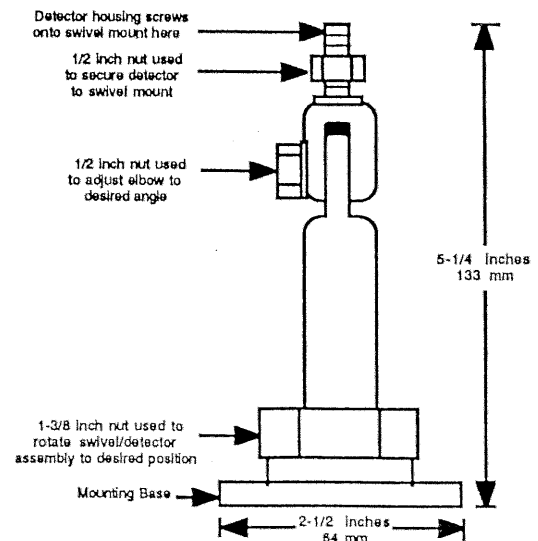


Figure 3--Q9001H Swivel Mounting Bracket (replaces nickel/brass and stainless steel Q9001B)

Figure 4 illustrates the Q9001J Swivel Bracket for use with C7051C Nuclear Surveillance Detectors and C7052 Ultraviolet/Infrared Detectors that use machined junction boxes. The Q9001J replaces the Q9001E.

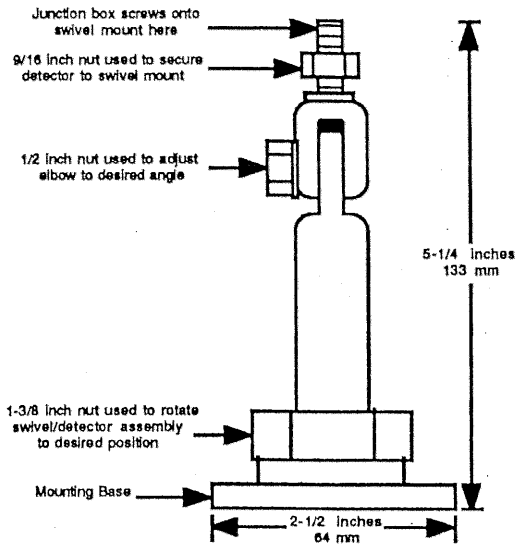


Figure 4--Q9001J Swivel Mounting Bracket (replaces Q9001E)

Figure 5 illustrates the Q9001K Swivel Bracket for use with C7051B Nuclear Surveillance Detectors and C7052 Ultraviolet/Infrared Detectors that are made of aluminum or stainless steel and use an "H-bracket" style swivel mounting. The Q9001K replaces the Q9001D.

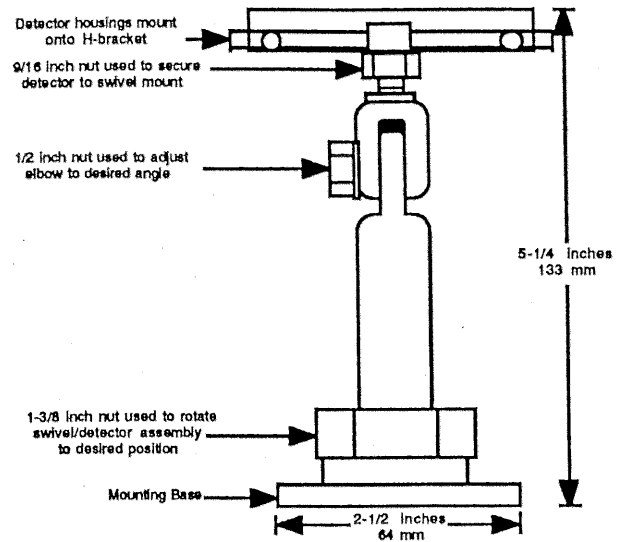


Figure 5--Q9001K Swivel Mounting Bracket (replaces Q9001D)

Detector Electronics Corporation

6901 West 110th Street • Minneapolis, Minnesota 55438 USA • Telephone (612) 941-5665
 Facsimile (612) 829-8750 • Telex 6879043 DETEL UW • Cable DETRONICS

Printed in USA